

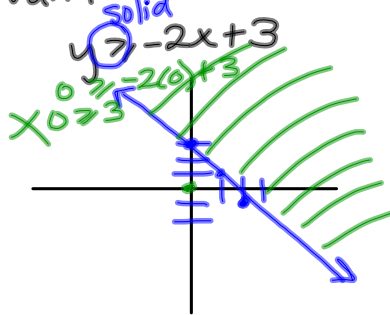
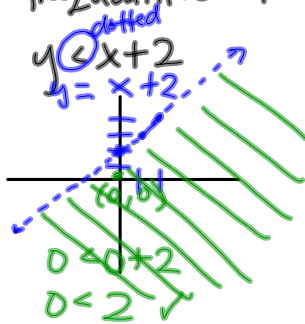
3.3/3.4 Linear Ineq. in 2 variables & Systems of inequalities

- Obj: 1. Solve & graph a linear ineq.
 2. " " a system of linear ineq.

$x > 2$ ineq. in 1 variable

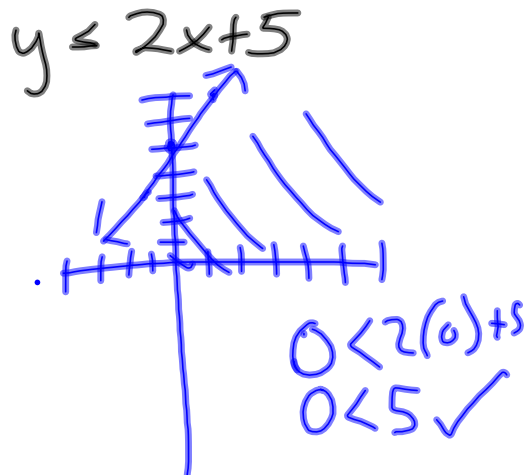
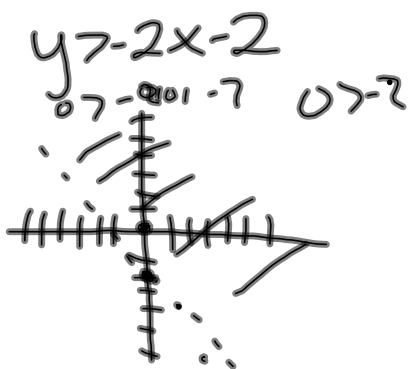


Inequalities in 2 variables:



Oct 4-11:04 AM

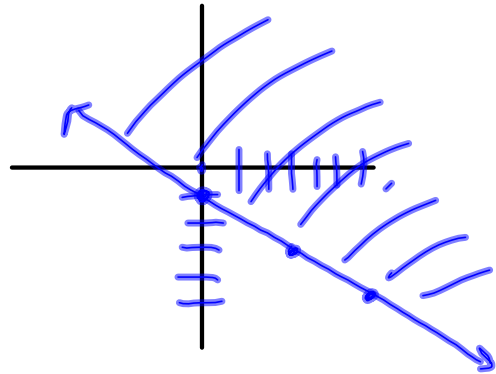
Graph:



Oct 4-11:27 AM

Graph:

$$\begin{array}{r}
 -2x - 3y \leq 3 \\
 +2x \qquad \qquad +2x \\
 \hline
 -3y \leq 2x + 3 \\
 \frac{-3y}{-3} \leq \frac{2x+3}{-3} \\
 y \geq -\frac{2}{3}x - 1 \\
 0 \geq -\frac{2}{3}(0) - 1 \\
 0 \geq -1 \checkmark
 \end{array}$$

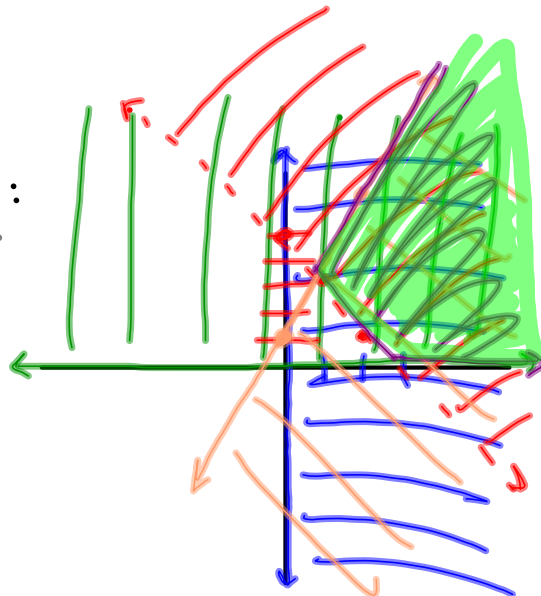


Oct 4-11:34 AM

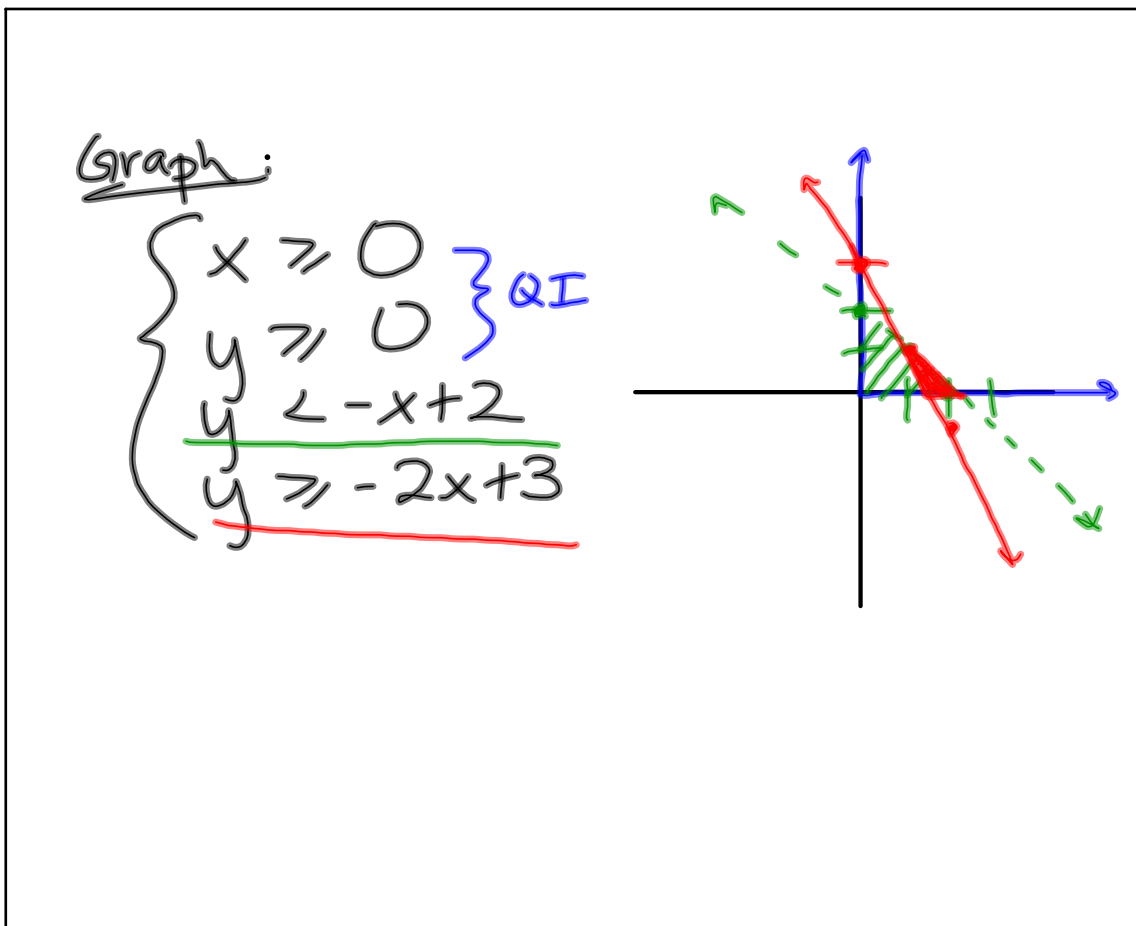
3.4

Graph the system:

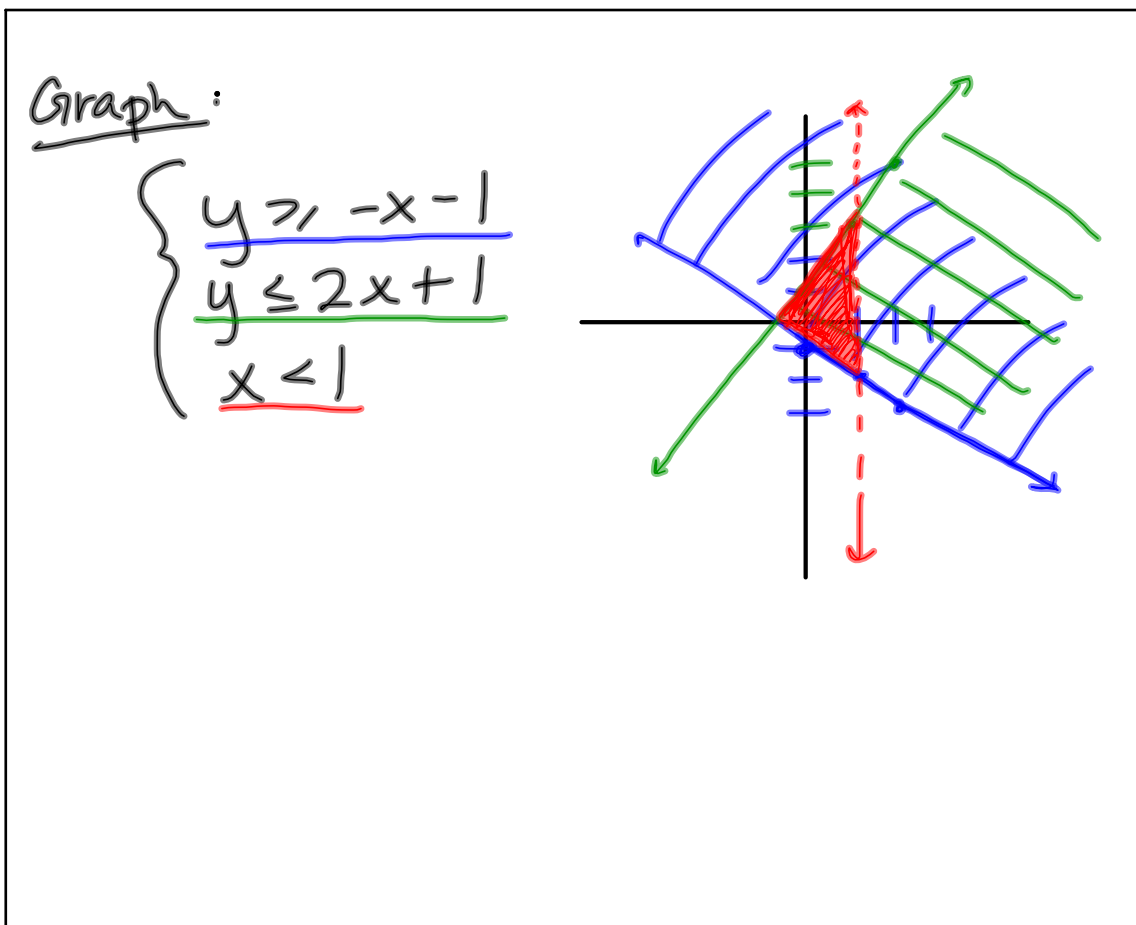
$$\begin{cases}
 x \geq 0 \\
 y \geq 0 \\
 y > -2x + 5 \\
 y \leq 3x + 1
 \end{cases}$$



Oct 4-11:34 AM



Oct 4-11:40 AM



Oct 4-11:43 AM